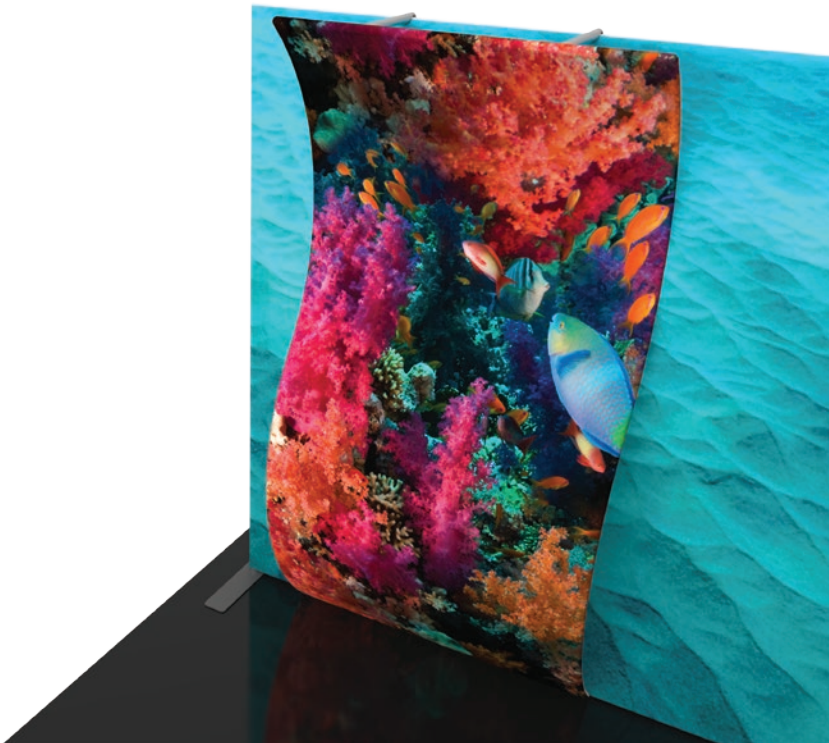


Formulate Accent Ladder 13

FMLT-WL13

Formulate™ Master Accents enhance the functionality of many Formulate Master 10' and 20' backwalls and add more real estate for messaging too! With monitor supports, literature pockets, shelves, tables, counters, and more, you are sure to find the accent that best suits your needs. Side tables and graphic headers are also available.



features and benefits:

- Premium aluminum tube frames with snap button assembly
- Easy to store and ship
- Quick to set up
- One zipper pillowcase fabric graphic
- Lifetime limited hardware warranty against manufacturer defects

dimensions:

Hardware	Graphic
<p>Assembled unit: 48"w x 92.68"h x 14.26"d 1219mm(w)x 2354mm(h) x 362mm(d)</p> <p>Approximate weight with cases: 39 lbs / 23.1kgs</p>	<p>Refer to related graphic template for more information.</p> <p>Visit: www.exhibitors-handbook.com/graphic-templates</p>
Shipping	
<p>Packing case(s): 1 OCL Case</p> <p>Shipping dimensions: 57"l x 19"w x 19"h 1448mm(l) x 482.6mm(w) x 482.6mm(h)</p> <p>Approximate total shipping weight (includes cases & graphics): 50.85 lbs / 23.07 kgs</p>	
	additional information:
	<p>Graphic material: dye-sublimation zipper pillowcase fabric</p> <p>Backwall sold separately.</p>

We are continually improving and modifying our product range and reserve the right to vary the specifications without prior notice. All dimensions and weights quoted are approximate and we accept no responsibility for variance. E&OE. See Graphic Templates for graphic bleed specifications.

Included In Your Kit

Tools, Components,
& Connectors



ALLEN KEY SET x1



TC-30-T x2

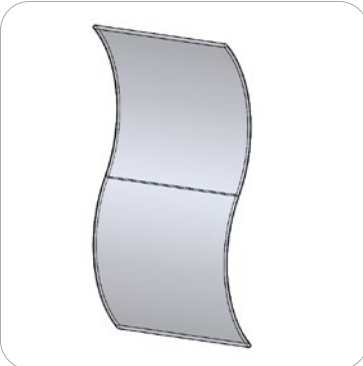


TC-30-90T x4



TCH-30-B2B-300 x2

Graphics



FMLT-WL13-G x1

Tubes



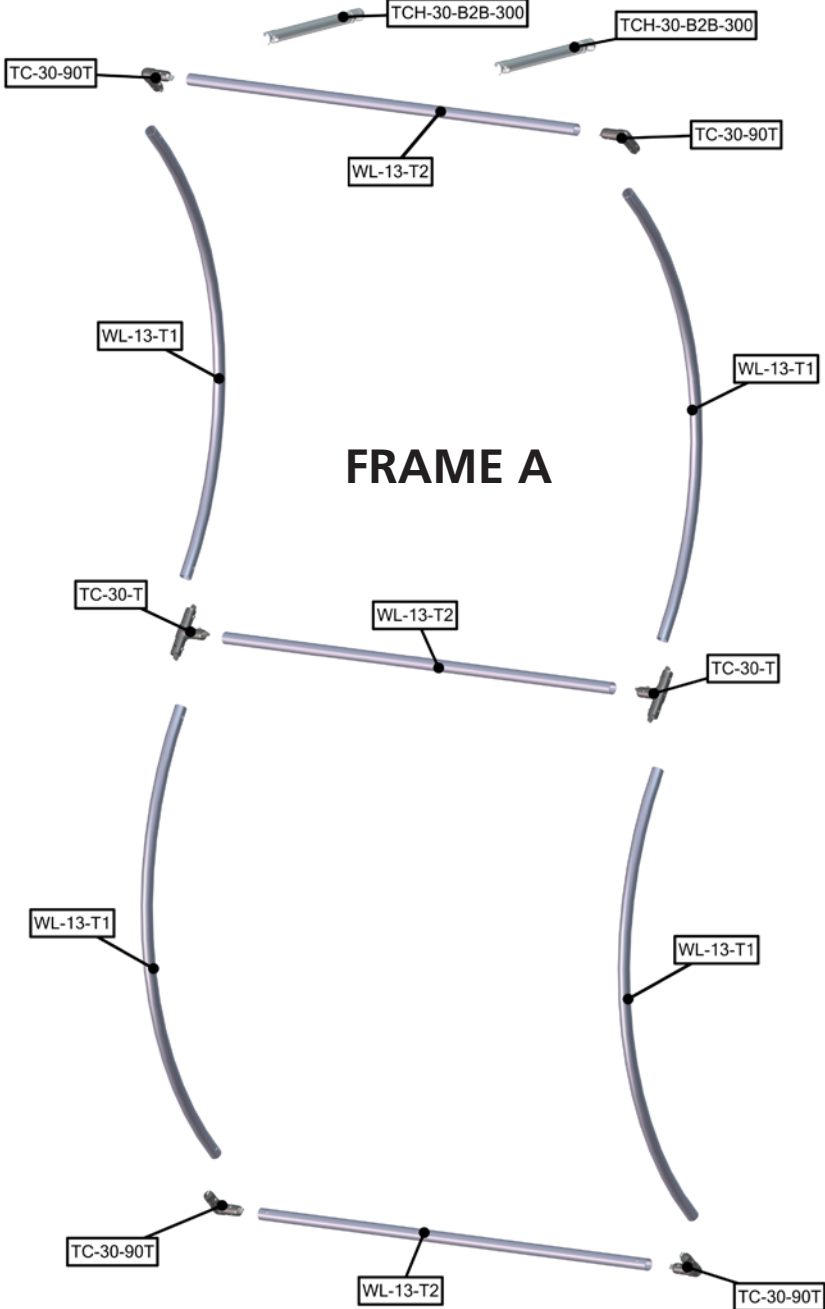
WL13-T1 x4



WL13-T2 x3

Exploded View

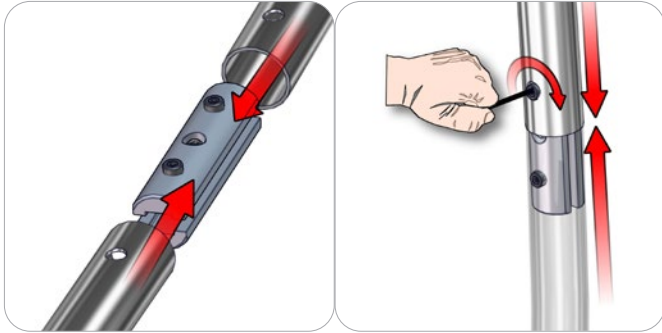
FMLT-WL-13



Connection Methods

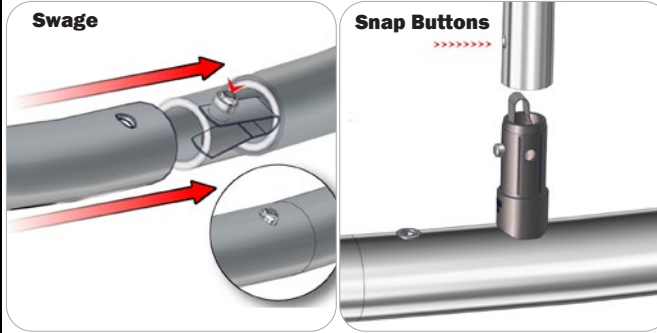
Formulate™ structures use a number of different yet simple connection methods. Your kit will include one or more of the connection methods shown below. Steps within the Kit Assembly will reference a specific method for each connection point.

Connection Method 1: ES30 / ES50 / ES75



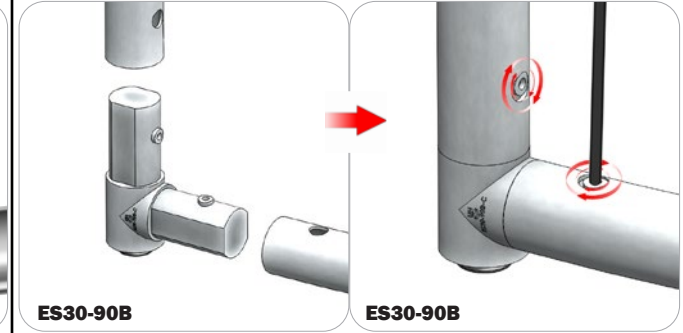
Compress the unlocked connector and slide one tube onto each end. Lock both screws carefully using your allen key tool. Be sure to lock securely, but do not overtighten.

Connection Method 2: Snap Buttons & Swage



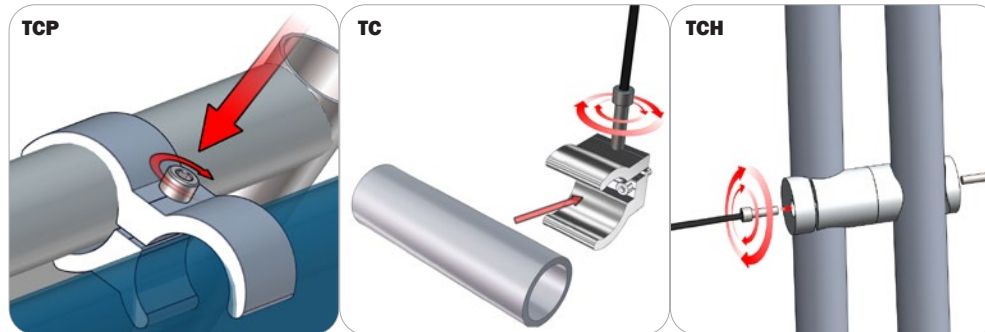
Locate the snap button on the connector or swage tube. Locate the hole on the corresponding tube. Press the snap button with your thumb and slide the tube and connector together so that the snap button snaps fully into the lock hole. To disassemble, press the snap button and pull apart.

Connection Method 3: ES30-90B / ES30-I / ES30-C



Compress one unlocked end of the connector and slide it through one tube end. Compress the other end of the connector and slide the second tube on. Lock both screws carefully using your allen key tool. Be sure to lock securely, but do not overtighten.

Connection Method 4: Tube Clamps



Be sure to fully assemble all frames before using clamps. With the clamp unlocked, place one tube of the first frame into the mouth of the clamp. Place the second tube (if applicable) into the second mouth of the clamp. With both frame's tubes in the clamp, be sure to lock securely, but do not overtighten.

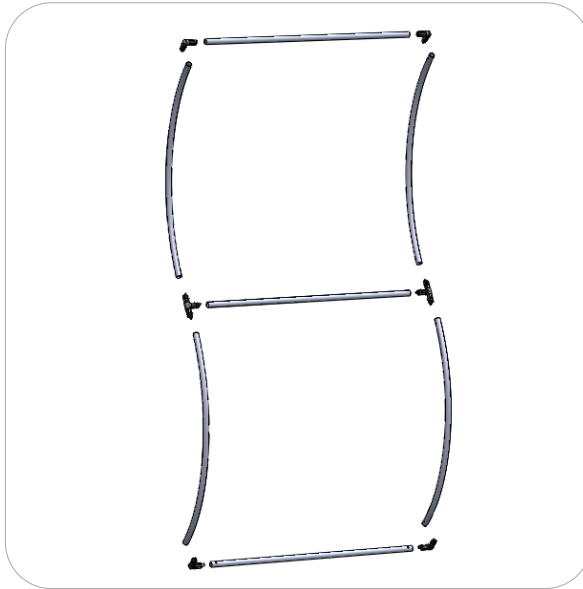
Kit Assembly

Step by Step

Step 1.

Gather the components necessary for assembling Frame A.

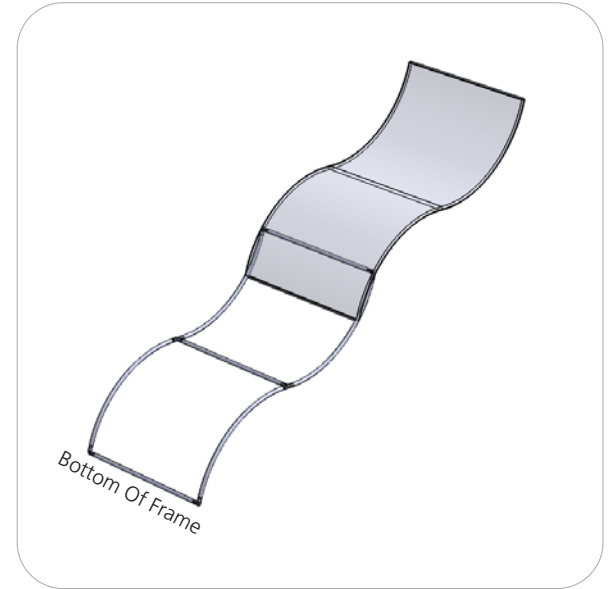
Please reference Connection Method 2 for more details.



Step 2.

With Frame A laying flat on the floor, locate your pillowcase graphic. With the pillowcase unzipped, encase Frame A by covering the frame from Top to Bottom.

Zipper located to the bottom of the graphic.



Step 3.

Locate both TCH-30-B2B-300 clamps. Attach to the top of your ladder.

Please reference Connection Method 4 for more details.



Step 4.

Locate the backwall and Frame A. Using the TCH-30-B2B-200's connect the frame to a backwall unit. Using the provided allen key set, attach the clamps to the tops of the frames as shown in the figure to the right.

Please reference Connection Method 4 for more details.

