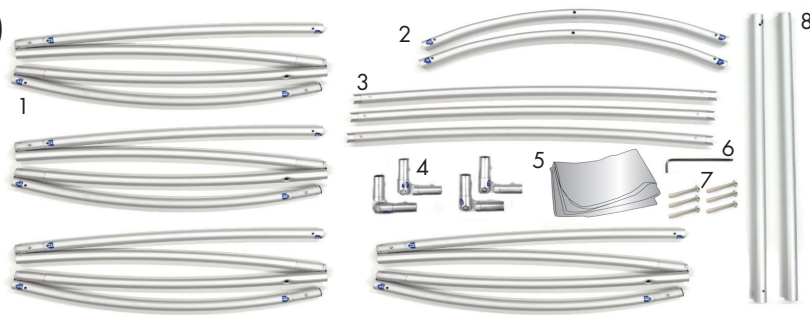


# Eurofit 10FT Arch or Arch Plus Display

## Product Parts

- 1 - 4pc Shock-Cord Poles (x4)
- 2 - Top Poles (x2)
- 3 - Support Poles (x3)
- 4 - Corner (x4)
- 5 - Graphic
- 6 - Hex Wrench
- 7 - Hex Screws (x6)
- 8 - Bottom Poles (x2)



## Display Set-Up

### Step 1

Remove everything from soft case and place on a clean flat surface. Verify you have all parts described above.

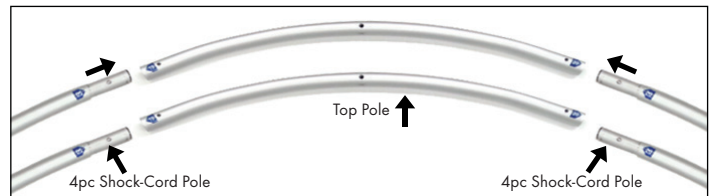
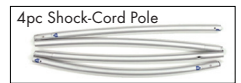
### IMPORTANT INFORMATION

\* During assembly, match the labels to each other on each connection point (Ex. T6 connects to T6).



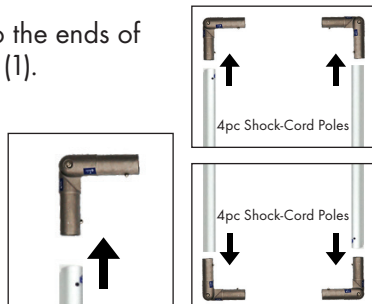
### Step 2

Assemble the four 4pc Shock-Cord Poles (1). Connect the ends of the four 4pc Shock-Cord Poles (1) into the ends of the Top Poles (2) creating two large arcs.



### Step 3

Connect the four Corners (4) to the ends of the four 4pc Shock-Cord Poles (1).



### Step 4

Using the six Hex Screws (7) and the Hex Wrench (6) Screw the three Support Poles (3) and the Bottom Poles (8) to one of the arcs assembled in Step 2.

\* **Do not tighten at this time.**

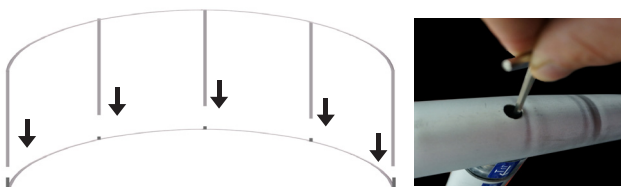


**Support Poles (3) have a slight arc to them. This arc needs to go towards the inside/underside of the frame.**

### Step 5

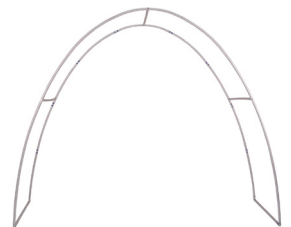
Assemble the two arcs together as shown. Tighten all Screws until snug.

\* **Do not over tighten.**



### Step 6

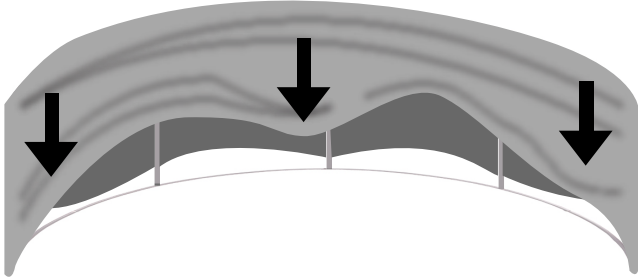
Your display should now look like the image to the right.



## Graphic Set-Up

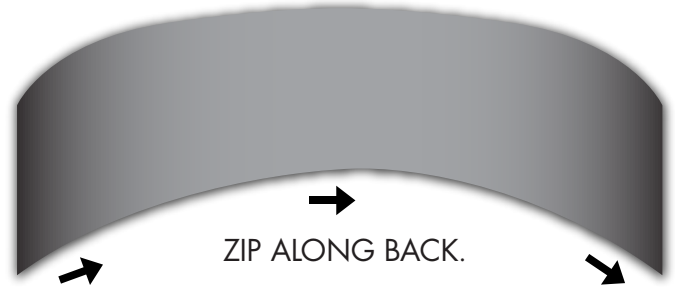
### Step 7

Lay your display on it's side. Drape you Graphic (5) over the side of the display and gradually pull it down over the display.



### Step 8

Zip the Graphic (5) closed around the Back.



### Step 9

Stand Display up.



## Storage & Care

Store in a cool dry location. Machine wash cold, gentle cycle. Air Dry Only